

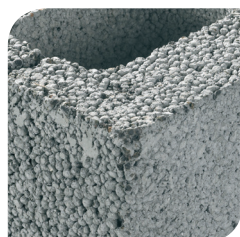
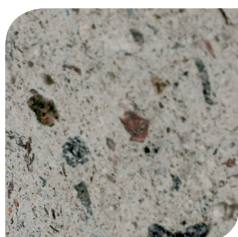
CHEMICAL ANCHORS

INJECTION RESIN

ITH-Pe



- **Cost-effective** general-purpose polyester-based resin
- **ETA-approved and CE-marked** resin suitable also for structural fixing applications
- **Resin now with ETA- approval also for masonry!**
- **Ideal for applications** in non-cracked concrete, brick, porous materials, and various hollow structures





ITH 300 Pe



ITH 165 Pe



ITH 410 Pe

ETA- approved styrene-free polyester-based general purpose resin

APPLICATIONS

- Wall ties
- Construction joints
- Gates
- Safety Barriers
- Facades
- Roofs
- Machinery
- Close-edge applications
- Small anchor spacings

APPROVALS



VERSIONS

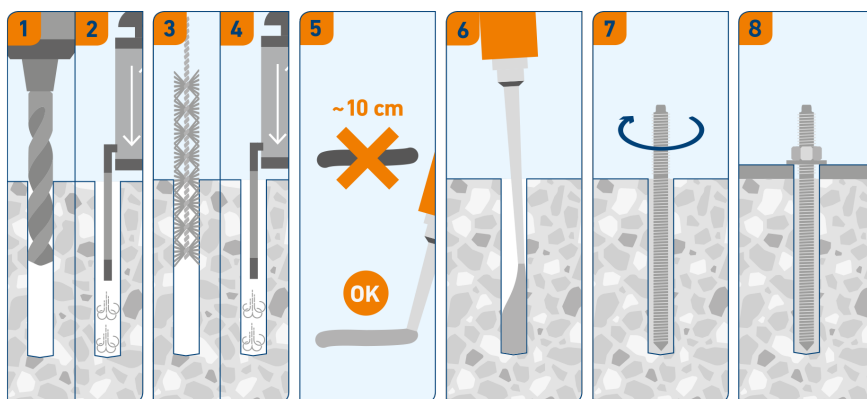
- **ITH 165 Pe**, 165 ml, product code 72900
- **ITH 300 Pe**, 300 ml, product code 72940
- **ITH 410 Pe**, 410 ml, product code 72941

PRODUCT DESCRIPTION

- A rapid-curing, styrene-free, two-component polyester resin used for bonding studs, bolts and rebar into pre-drilled holes.
- Ideal for applications in non-cracked concrete, brick, porous materials, and various hollow structures.
- A LEED-tested resin that has good temperature resistance (-40 °C...+80 °C) and a low VOC content.
- Store partially used cartridges with mixer nozzle on, and change the mixer before re-using. The expiry date is marked on the cartridge.
- A mixing nozzle is included with each cartridge. An ordinary, good quality silicone gun can be used with the 165 ml and 300 ml resins.
- Suitable conditions depend on the stud or rebar material: ZN for dry indoor and temporary outdoor use, HDG and RST A2 for dry and humid indoor use and for outdoor use in rural areas, HST A4 for indoor, outdoor and industrial use, HCR for extremely corrosive conditions.

BASE MATERIALS

- **Approved for:**
 Non-cracked concrete
 Aerated concrete block
 Hollow light expanded clay aggregate block
 Perforated clay brick
 Perforated sand-lime brick
 Solid clay brick
 Solid light expanded clay aggregate block
 Solid sand-lime brick
- **Also suitable for:**
 Hollow-core slab
 Natural stone



INSTALLATION DETAILS

1. Drill a hole according to the product details.
- 2-4. Clean the hole with a metal brush and blow-out pump.
5. Squeeze out at least 10 cm of resin until you see the different-coloured components mix fully.
6. When fixing in solid base materials, fill 2/3 of the hole with resin. With hollow constructions, insert the sleeve and fill it completely.
7. Screw the stud or other fixing device into the hole.
8. Observe the given working and curing times. Install the object to be fixed and tighten the nut to the correct torque.